

Webstore4
Ravenweg 15
3776MP Stroe
The Netherlands
info@webstore4.com
WebStore4.com



WL4 TT40 datasheet

Mast height: 4 meters (-0/+20mm)

Number of parts: 3

Wall thickness: 2 millimeters

Material: Hot-dip galvanized steel

Brand: WL4

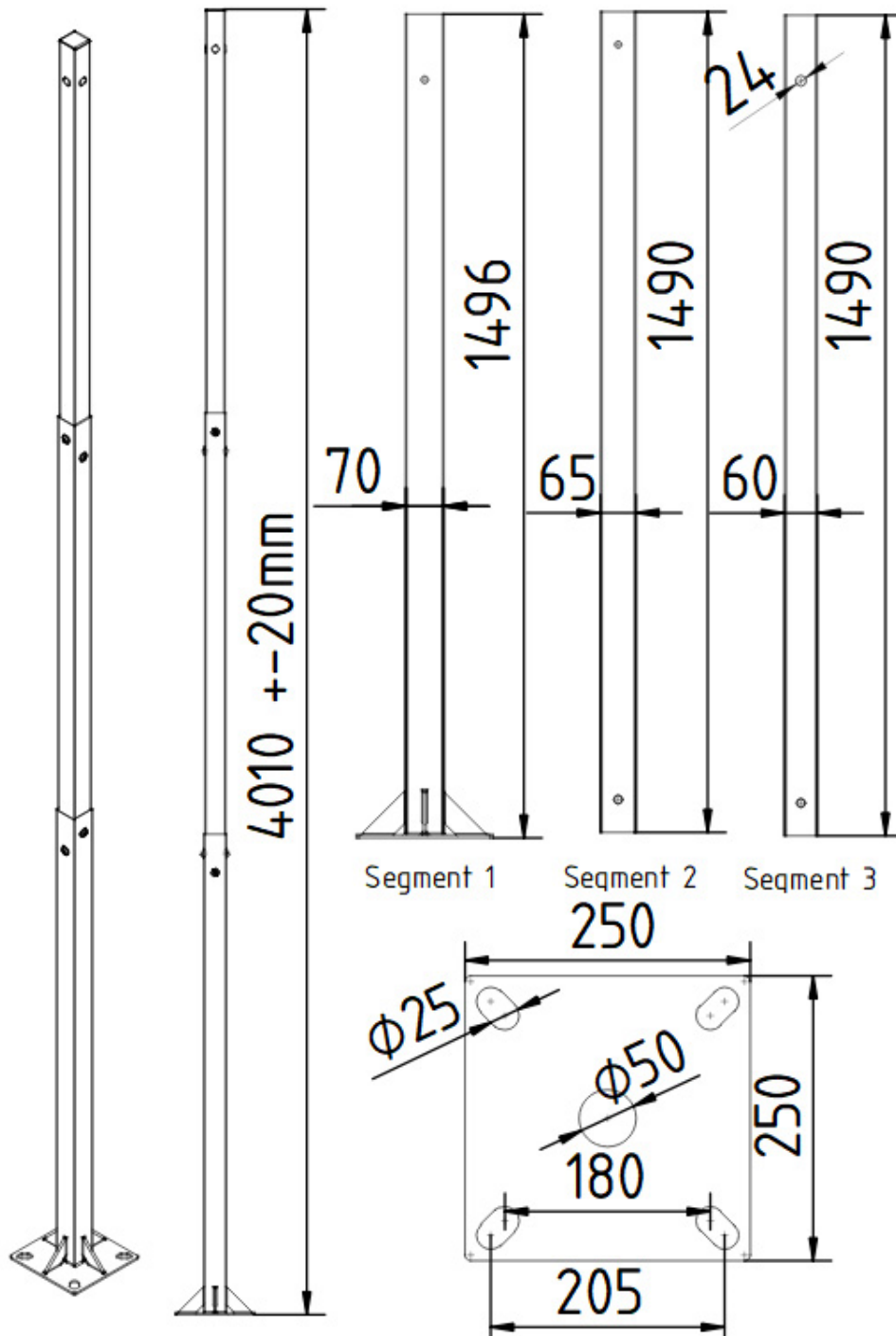
Maximum height of individual parts: 1.5 meters

Cross-section of elements: 70 x 70 mm (part 1), 65 x 65 mm (part 2), 60 x 60 mm (part 3)

Weight: 21.1 kg theoretical



Dimensions WL4 TT40



Webstore4
Ravenweg 15
3776MP Stroe
The Netherlands
info@webstore4.com
WebStore4.com

WebStore4

Connection of segments

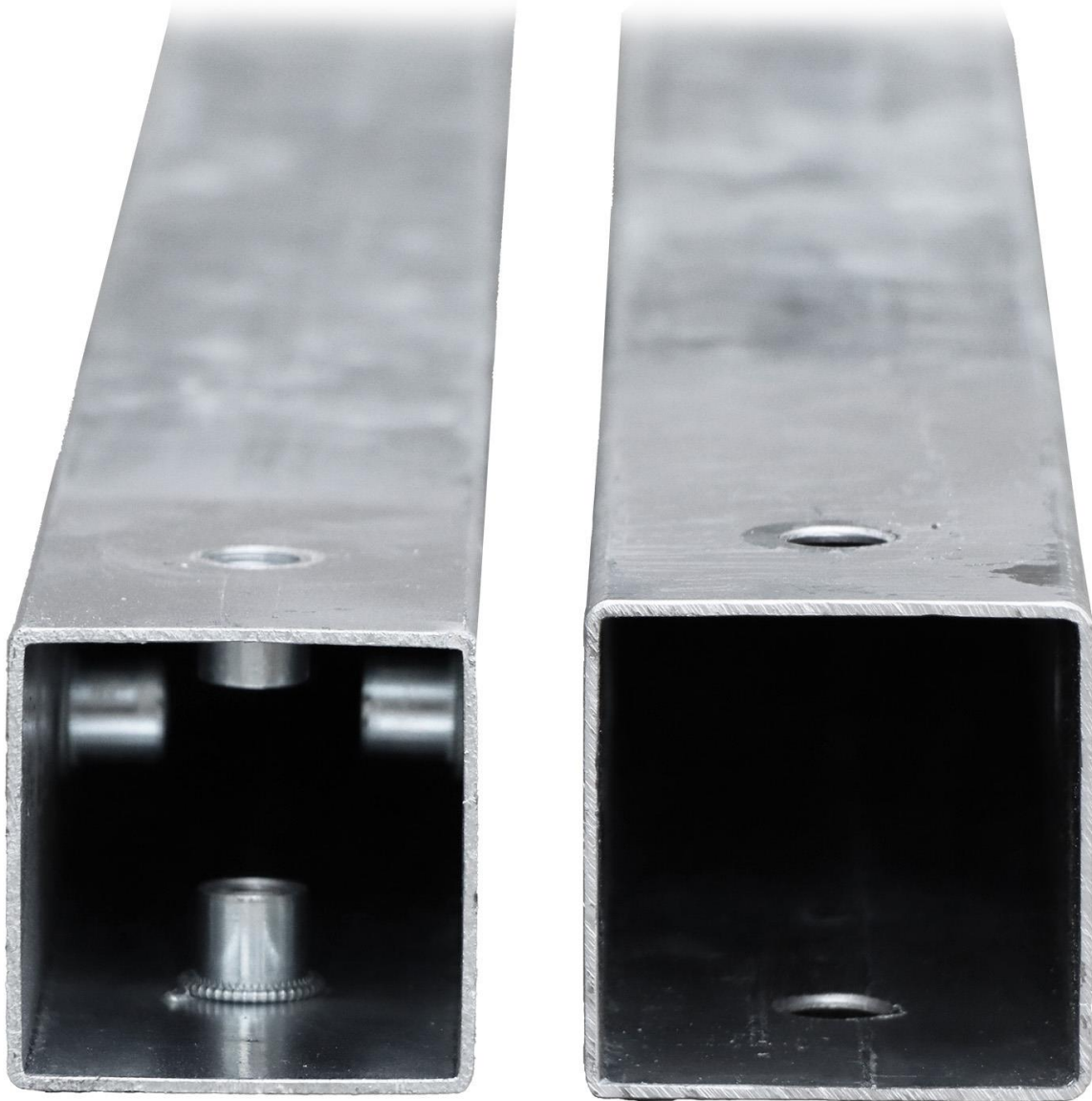


WebStore4

Webstore4
Ravenweg 15
3776MP Stroe
The Netherlands
info@webstore4.com
WebStore4.com

WebStore4

Interior view

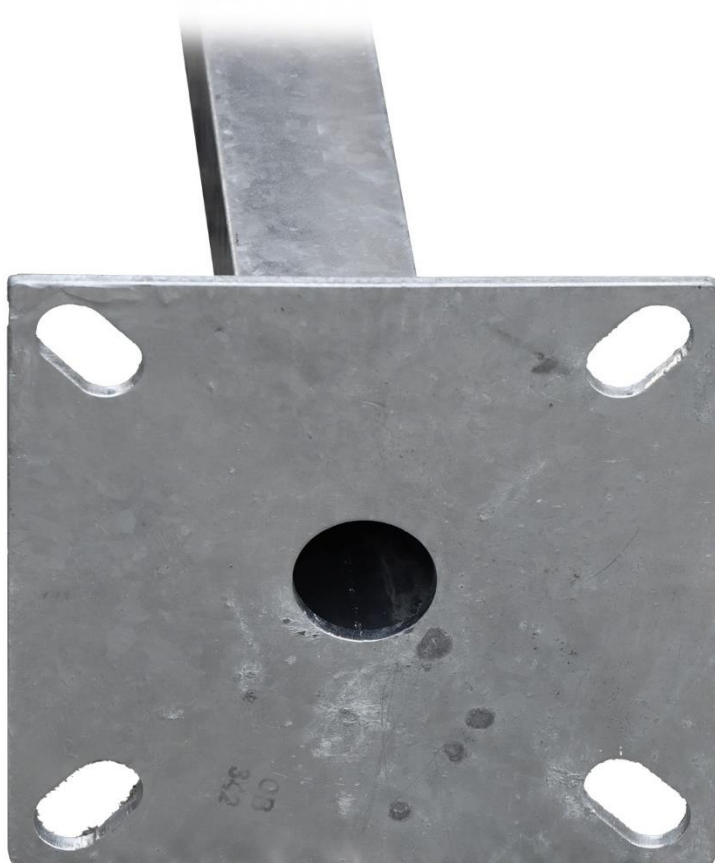
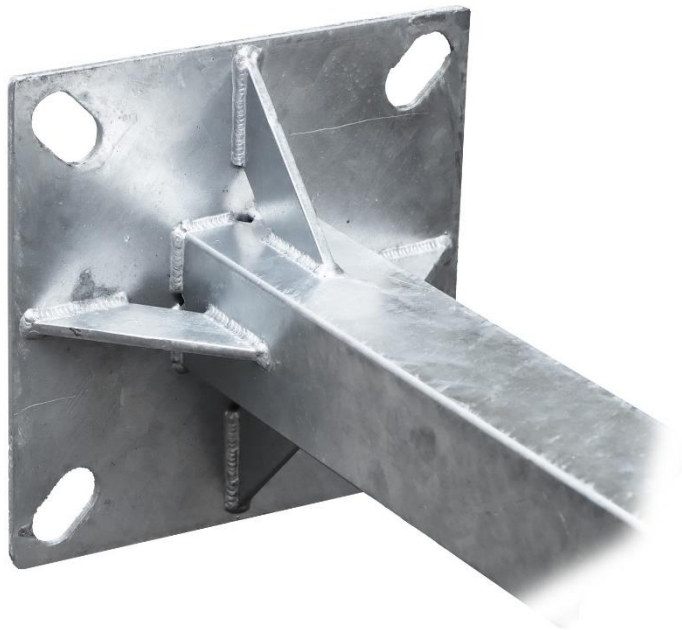


WebStore4

Webstore4
Ravenweg 15
3776MP Stroe
The Netherlands
info@webstore4.com
WebStore4.com

WebStore4

Basis



WebStore4

Webstore4
Ravenweg 15
3776MP Stroe
The Netherlands
info@webstore4.com
WebStore4.com

WebStore4

Mast top element



WebStore4