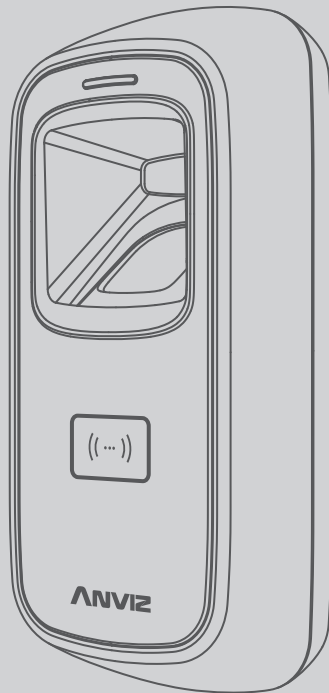




M5 Plus

**Outdoor Fingerprint & Card
Reader/Controller**

Quick Guide V1.5



Package List



Device



X2



X1

Screws



RJ45 Connector



USB



Quick Guide



X4

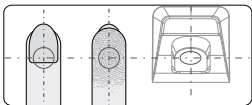
RFID Card

Notification:

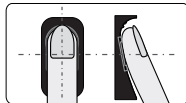
1. Please check if the package contains all the items listed above. Contact the distributor if there is any problem.
2. Please keep the product away from the magnetic field, and avoid causing any damage to the device.
3. Please use the original power supply or refer to the instruction to get the right power supply.
4. Please strictly follow the instructions to install the product. Any damage to it caused by incorrect operation and wiring are not under warranty.

Illustration for placing finger

- **Correct method** (Straighten your finger and then place it on the sensor Ensure the finger is flat and covers the entire sensor)



Always place finger in the center of the sensor.



Try to place your finger covers the entire sensor.

- **Incorrect method**



DO NOT move your finger before the sensor backlight turns off.



DO NOT place finger away from the center of the sensor.



DO NOT place finger at an angle.



DO NOT take off finger during the fingerprint verification process.



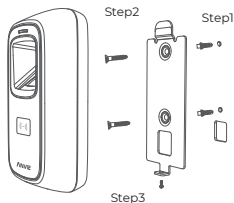
DO NOT just use your fingertip.



DO NOT slide your finger during the fingerprint verification process.

Installation Diagram

Back panel install way:



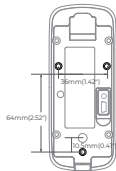
Steps:

Step1: Drill holes in the wall follow the hole position on back panel.

Step2: Install and fix back panel, connect related cables.

Step3: Place M5 Pro on back panel, fix screw at the bottom of M5 Pro.

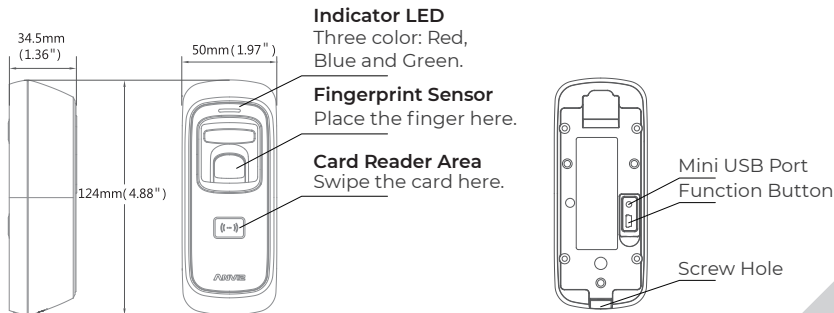
Without back panel install way:



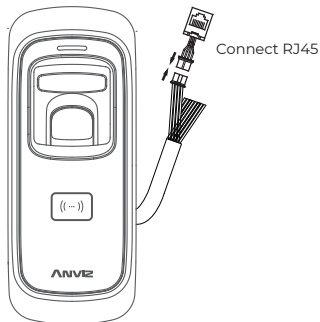
Steps:

Install M5 screws directly to the bottom shell behind the wall, the depth of screws is 8mm(0.31"). This install method is unique, safe and convenient. Package list does not include these screws, please select matchable screws according to the wall thickness.

Appearance



Wiring Instruction

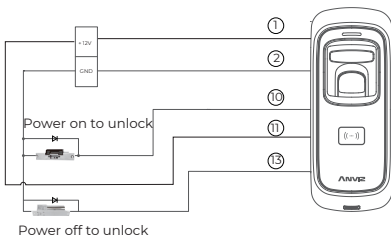


Function	PIN	Cable Color	Description
Power	1	Red (Thick)	DC12 V
	2	Black (Thick)	GND
Tamper alarm	3	Pink (Thick)	Tamper Alarm Signal
	4	Black	Exit Button
Wiegand Output	5	Green	Wiegand 0 Input/Output
	6	White	Wiegand 1 Input/Output
Pulse signal	7	Brown	Door Magnetic
	8	Light brown	RS485A
	9	Light blue	RS485B
Relay Output	10	Blue	NO
	11	Light green	COM
	12	Orange	NC

Switching Power Supply



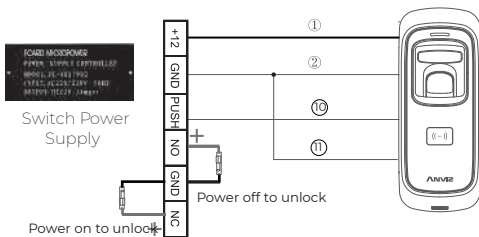
Switch Power Supply



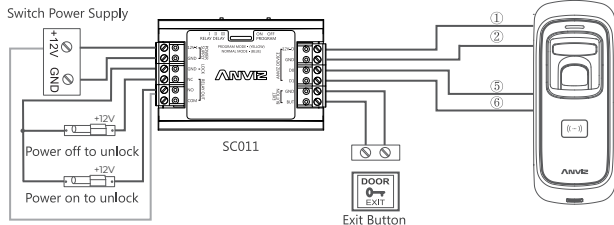
Important notice:

Please carefully follow this wiring instruction. Any damage caused by incorrect wiring is not covered by warranty.

Wiring Type Access Controller



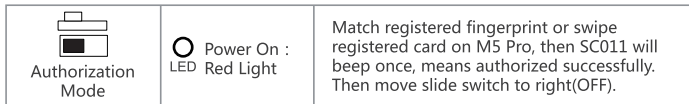
Anviz Wiegand Wiring:



SC011 authorization setting:

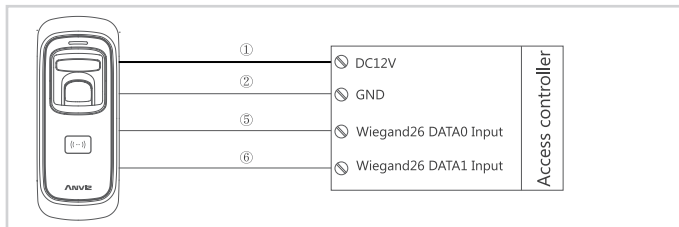
Make sure correct wiring between M5 Plus and SC011, power on them, then move slide switch to 'PROGRAM MODE' as below:

Switch in 'PROGRAM' on the SC011: Move slide switch to left (ON).



Wiegand Wiring:

Between M5 Plus and Anviz SAC844 or other Access Controller as below:



Wiegand data output format:

1. Anviz Wiegand data output format:

ALL registered users output devices' last eight serial number. (For example, SN of one device is 105000014470004, then Anviz Wiegand output 14470004.)

2. Wiegand data output format:

Card userOutput card number. (Decimal)

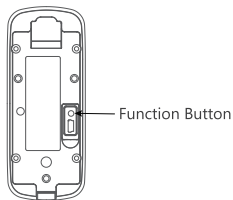
Fingerprint useOutput ID number

3. Wiegand output format can be set by PC software

Function Button

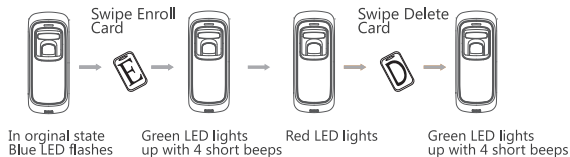
Press function button until you hear beeps which means the information of Enroll Card and Delete Card have been eliminated in the device.

Notice: The operation will not delete user data stored in the device.



After that, you **MUST** register management cards (Enroll Card and Delete Card) to run the machine.

- Register Management Cards (Enroll Card and Delete Card)



Operation Guide

■ IMPORTANT:

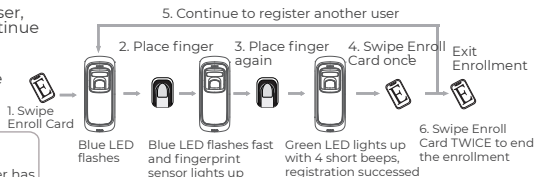
M5 Pro is suitable for DC12V power supply only. When connect to DC12V power supply, the indicator light displays blue and flashes fast. Meanwhile, the backlights of fingerprint sensor turn on with beeps.

■ Register User:

- Add One Fingerprint per User Only:

Note: 1. After finish enrolling current user, please swipe enroll card and then continue register another user.

2. After finish enrollment, please swipe enroll card TWICE to exit enroll status.



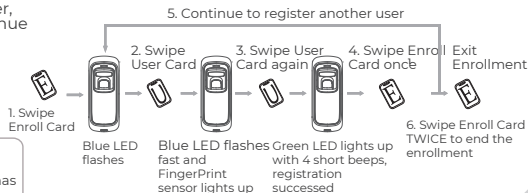
Notice:

When you place finger on M5 Pro, Red LED flashing with two long beeps means the finger has been registered.

- Add Card Only:

Note: 1. After finish enrolling current user, please swipe enroll card and then continue register another user.

2. After finish enrollment, please swipe enroll card TWICE to exit enroll status.



Notice:

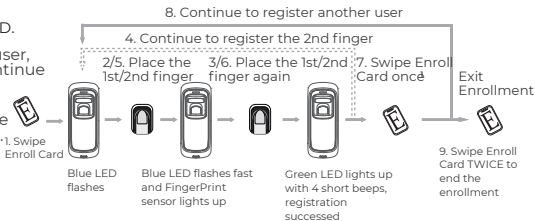
When you swipe card on M5 Pro, Red LED flashing with two long beeps means the card has been registered.

Operation Guide

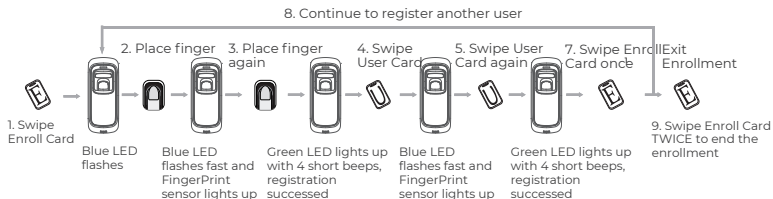
- Add Two Fingerprints of one User:
* Two fingerprints belongs to one user ID.

Note: 1. After finish enrolling current user, please swipe enroll card and then continue register another user.

2. After finish enrollment, please swipe enroll card TWICE to exit enroll status.



- Add Fingerprint and Card of one User:
* The wiegand output of fingerprint and card are the same.



Note:

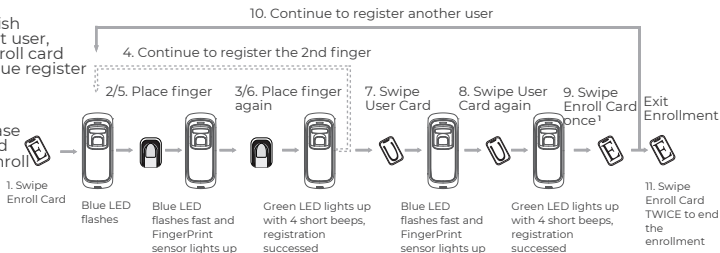
1. After finish enrolling current user, please swipe enroll card and then continue register another user.
2. After finish enrollment, please swipe enroll card TWICE to exit enroll status.

Operation Guide

- Add Two Fingerprints and Card of one User:
 - * The wiegand output of fingerprint and card are the same.

Note: 1. After finish enrolling current user, please swipe enroll card and then continue register another user.

2. After finish enrollment, please swipe enroll card TWICE to exit enrollment status.



■ Delete User:

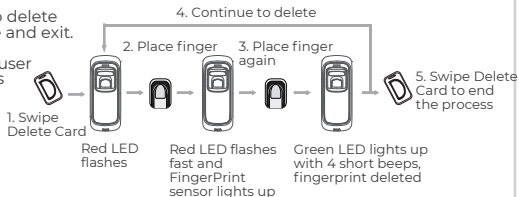
- Delete Fingerprint or Fingerprint and Card

After delete one user, you can continue to delete another user or swipe Delete Card to save and exit.

When fingerprints or card belong to one user ID, you can delete either one to delete this user.

Notice:

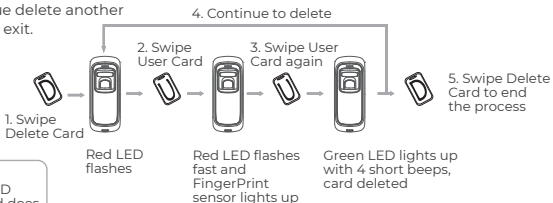
When you place finger on M5 Pro, Red LED flashing with long beeps means the fingerprint does not exist in the device.



Operation Guide

• Delete Card:

After delete one user, you can continue delete another user or swipe Delete Card to save and exit.

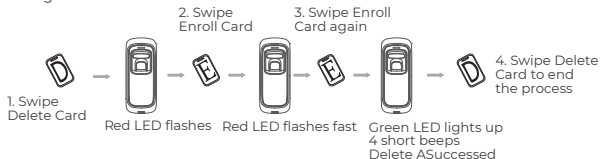


Notice:

When you swipe card on M5 Pro, Red LED flashing with long beeps means the card does not exist in the device.

• Delete All Users

Delete all uses fingerprints and cards, the device parameter setting do not change.



Anviz brand and product are trademarked and protected under law of the United States.

Unauthorized use is prohibited.

For more information, please visit www.anviz.com, or send email to sales@anviz.com for more help.

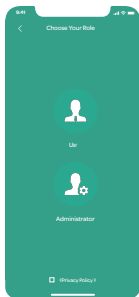
©2020 Anviz Global Inc. All Rights Reserved.

Bluetooth connection&configuration

Bluetooth connection&configuration:

1. Make sure your cell phone Bluetooth is on.
2. During the setup between app and the M5 plus, please make sure the mobile and M5 Plus are within effective distance ($\leq 100\text{CM}$)($\leq 39.37''$).
3. According to the strength of Bluetooth signal and MAC address from the Bluetooth device which found by phone, you can check whether it's the correct device or not.

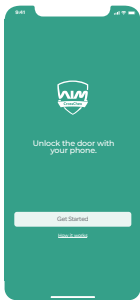
App installation, setting & user registration:



1.Using the QR code which can get from the Google play,
<https://www.anviz.com/CrossChex.html> or manual to install the Crosschex Mobile APP

2. The interface of Mobile app will be like the below picture when initializing.

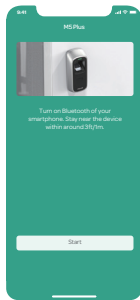
Clicking the privacy policy,then if you choose user option to sign in, it will show green background colour, if you choose administrator, it will show gray background colour.



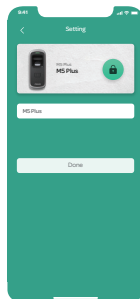
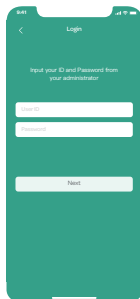
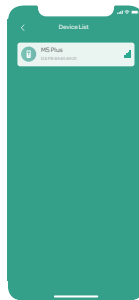
Click the "Get Started"



Choose the proper device



The app can search and match the proper device.

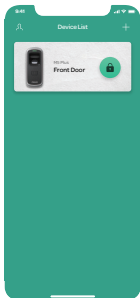


Input the M5 Plus device default ID and password to identify the setting, once matching successfully, it is working with the voice and LED reminder.

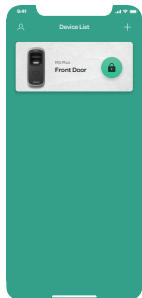
Default user id:0 password:12345



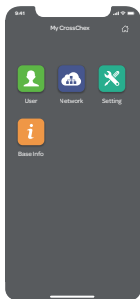
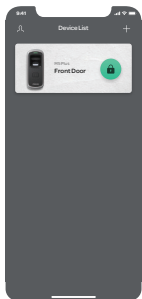
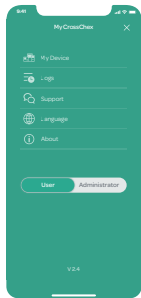
Hold the circle area a few seconds to modify or delete device.



Click the lock icon to lock or unlock



Choose the icon on the left top corner, you can switch to normal user or admin user and do the record check...



When signing in as administrator on the app, administrator can choose one of the available devices to finish the setup at admin menu. Eg: user registration, network setting, parameter etc.



In order to protect the environment, Anviz has decided to go "CD Free" campaign since June 1st 2019. We will provide QR code for you to download the electronic documents to make sure that you understand how to install and use Anviz devices.



CrossChex Mobile App



<https://bit.ly/2vn0wh6>

Google



<https://bit.ly/2J9qA95>

Anviz

Anviz brand and product are trademarked and protected under law of the United States.
Unauthorized use is prohibited.

For more information, please visit www.anviz.com, or send email to sales@anviz.com for more help.

©2020Anviz Global Inc. All Rights Reserved.