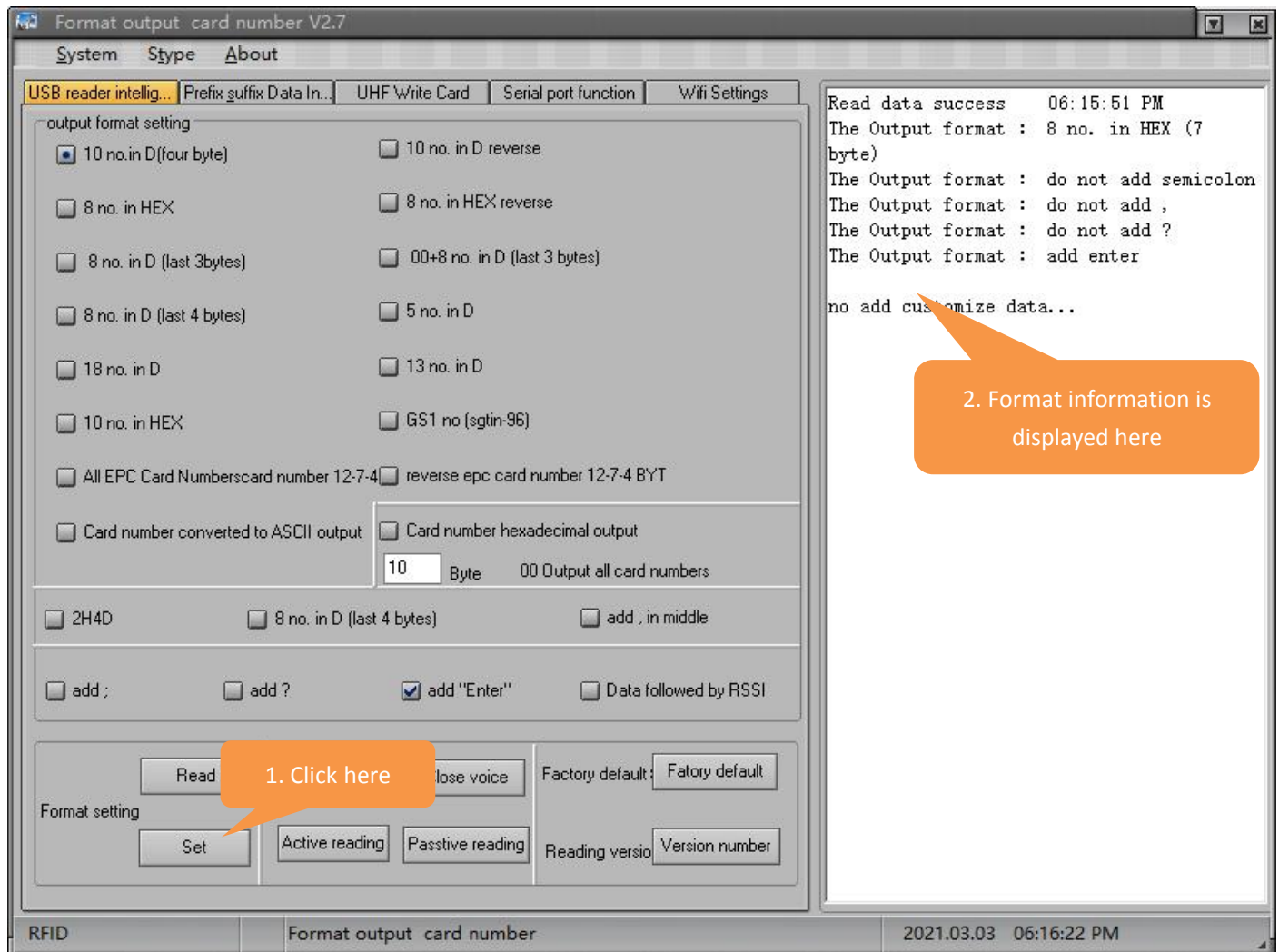


# The UHF reader uses the instructions

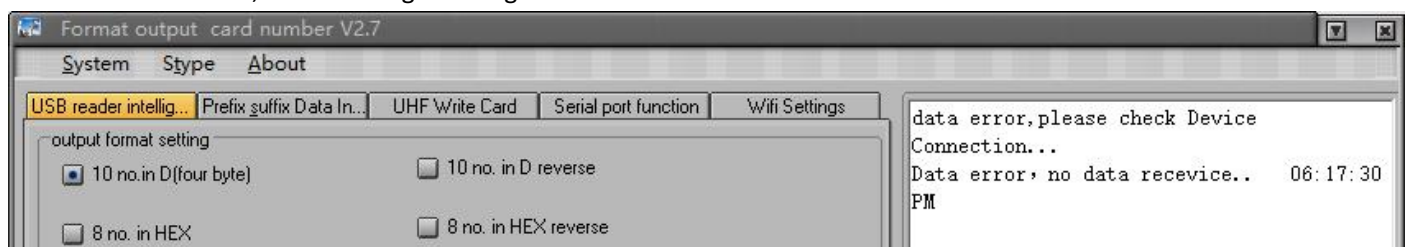
## 1, connecting devices and software



Connect the reader to your computer, double-click Open Application, click the Read Format button, and the current format of the connected card reader will be displayed in the status box on the right side of the software.

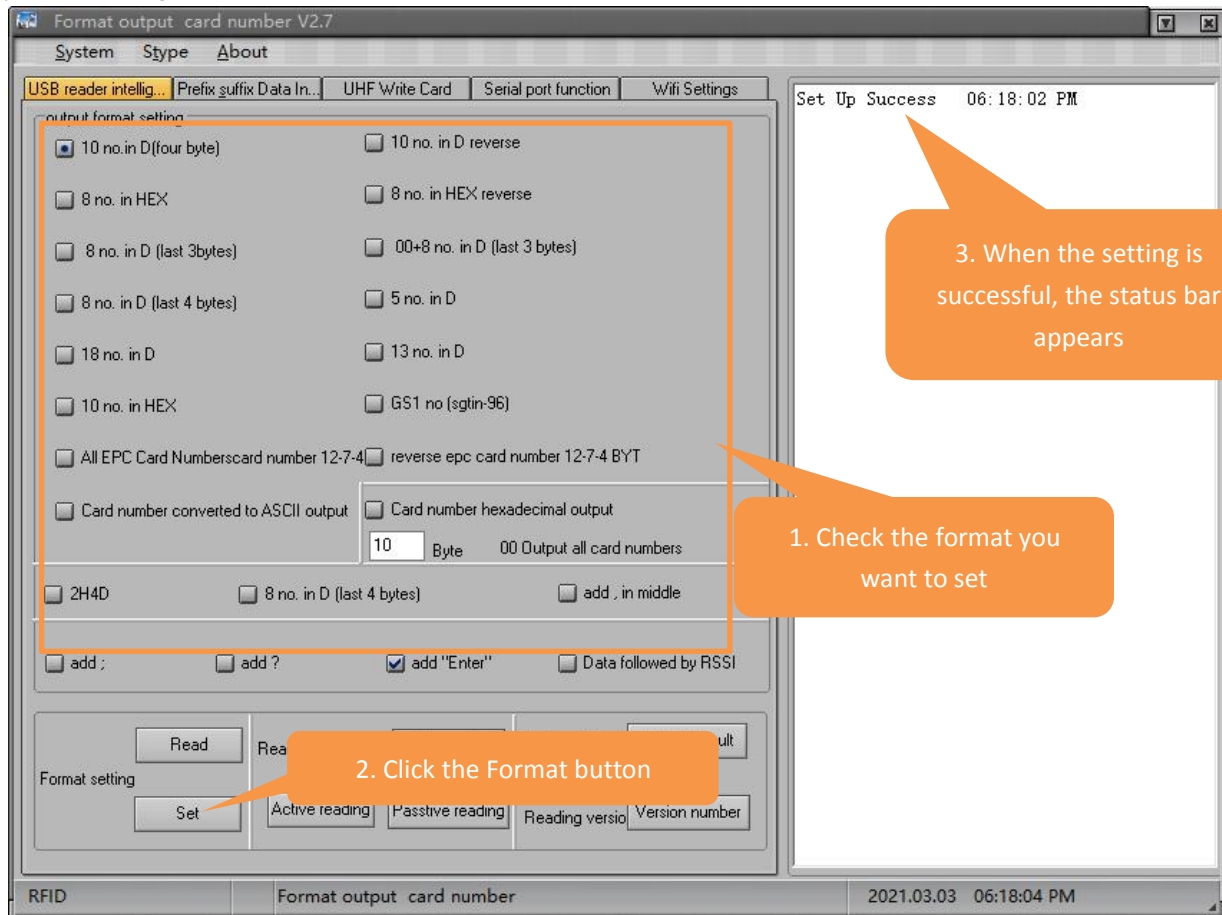


If the connection fails, the following is the figure

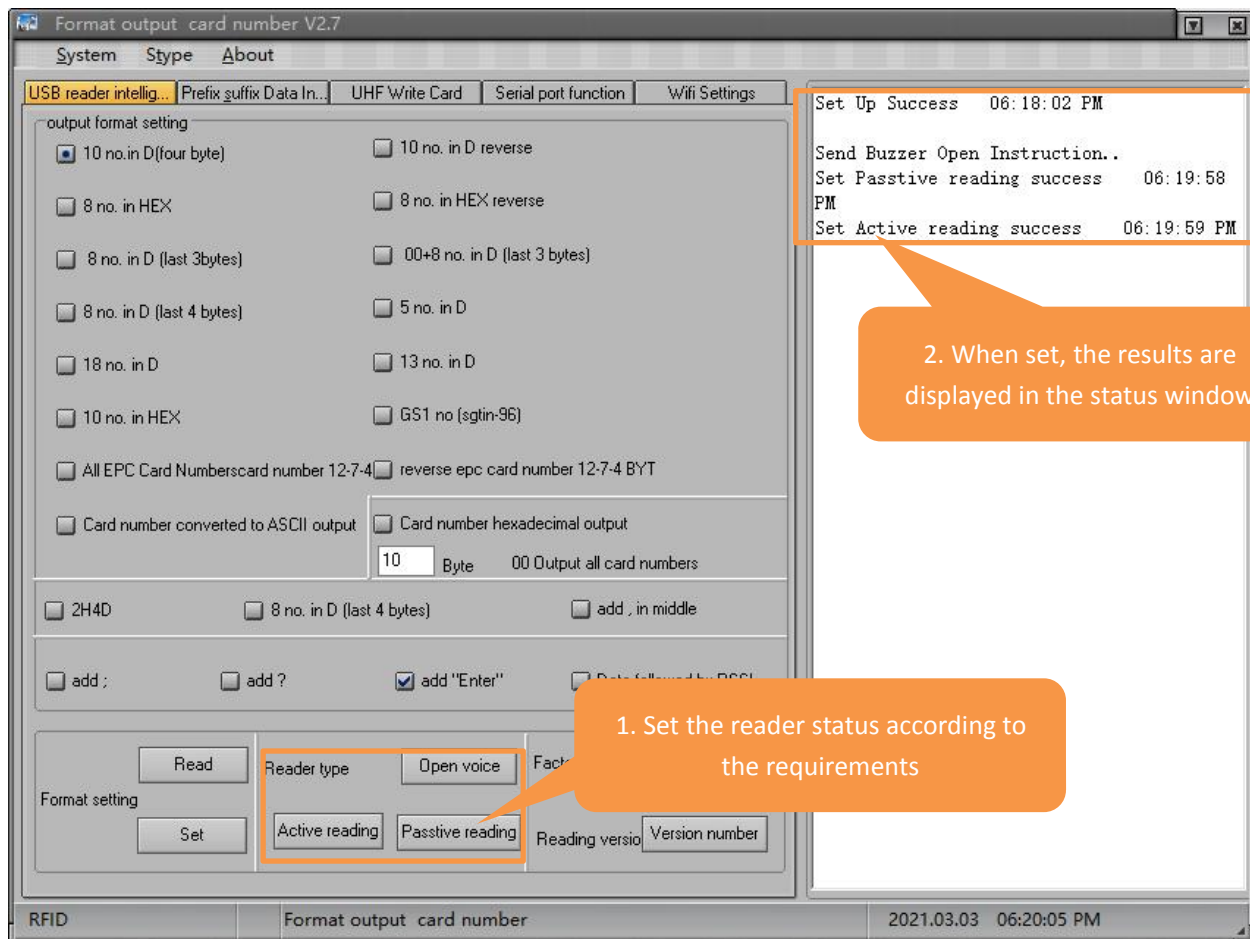


## 2, reader state output format

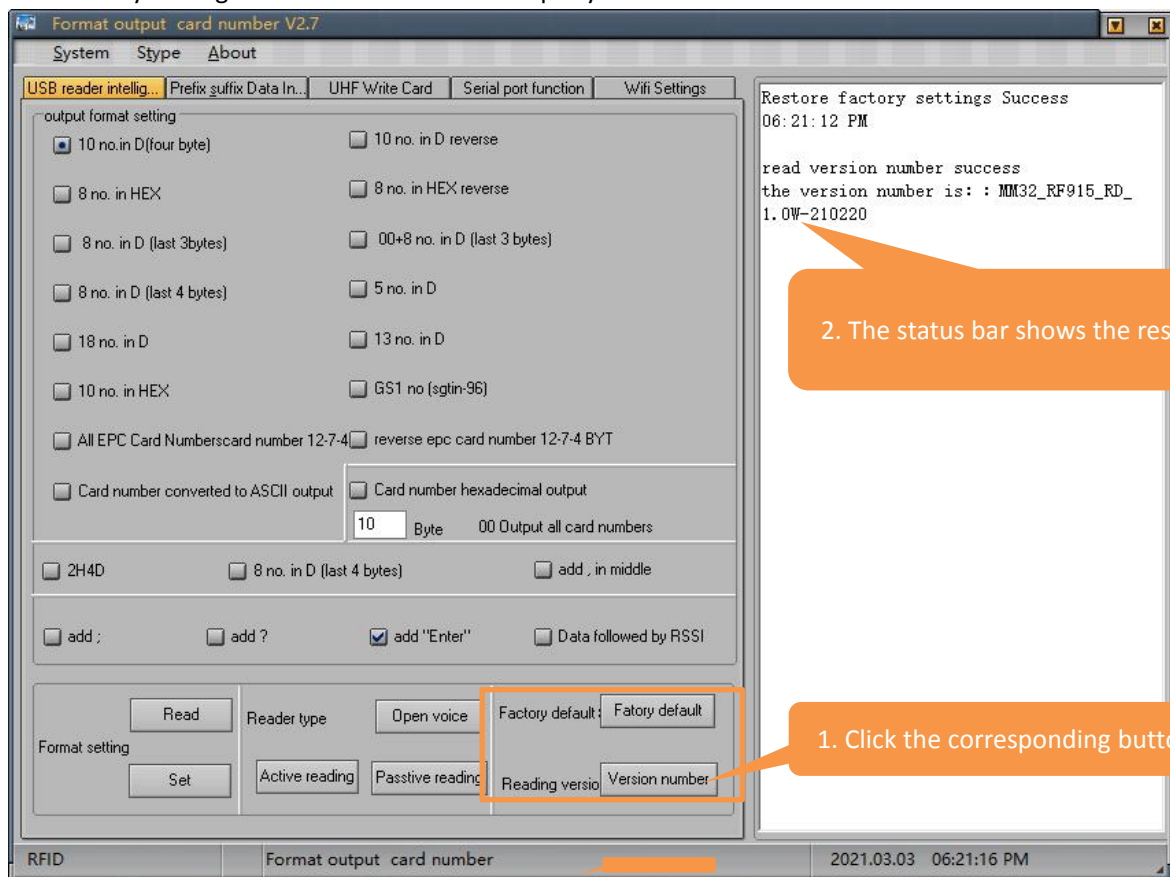
### 2.1 Output formatting



### 2.2 Reader status settings



### 2.3 Restore the factory settings with the version number query

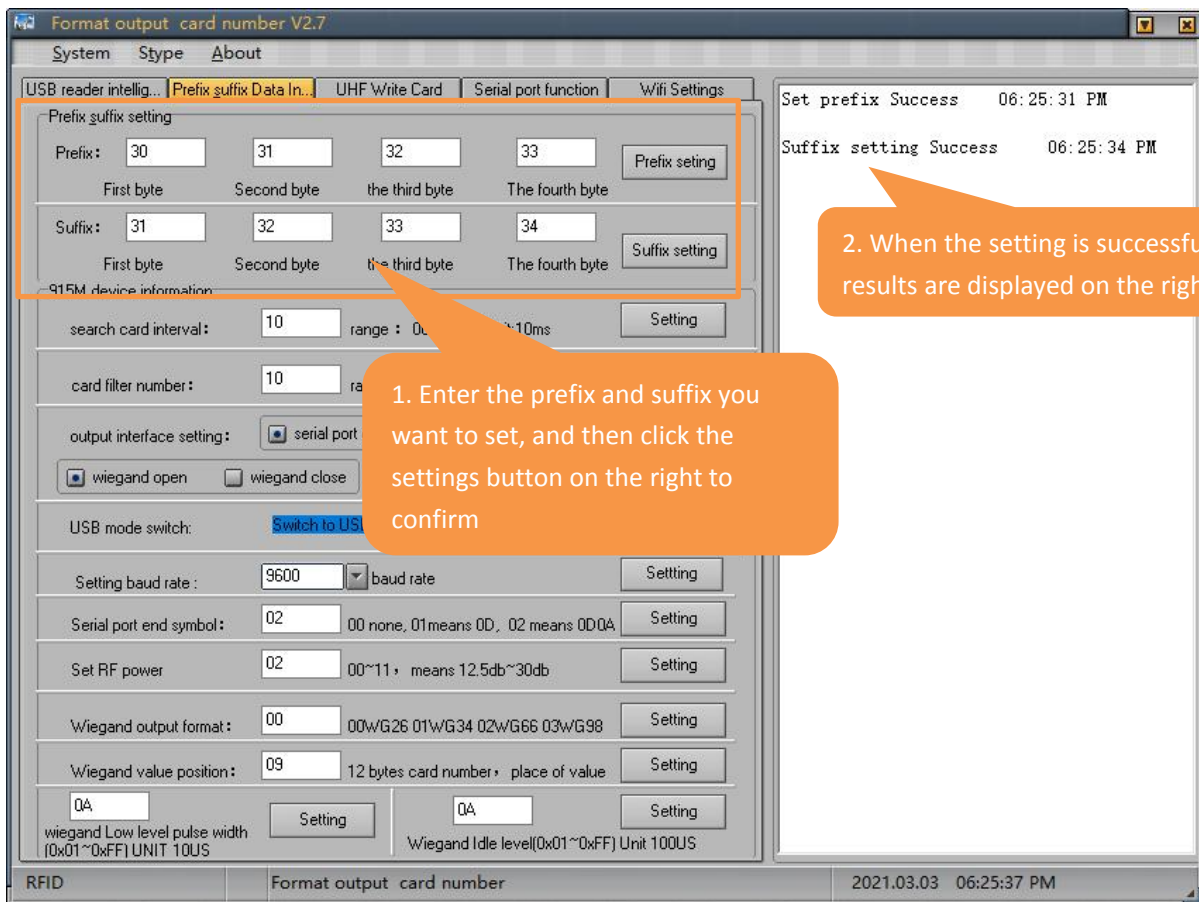


## 3, before and after the data input

### 3.1 prefix settings

Fill in the prefix and suffix that need to be added here, up to four bytes, and click the settings button after filling in to

complete the setup, as shown in figure:



### 3.2 915M machine information

The card-seeking interval value, which refers to the two card-reading intervals, and the longer the value, the longer the interval

The number of card filters, which refers to the number of reads of duplicate cards, and the longer the value, the longer the interval between repeated reads

Output interface settings, on demand to turn the interface on or off, the point settings button to complete the settings

USB keyboard mode switching, set to a USB virtual serial port, you need to enter the USB data debugging tab to operate, see the following instructions

Baud rate defaults to 9600, select the value you want and click the right-hand setting button to complete the setup

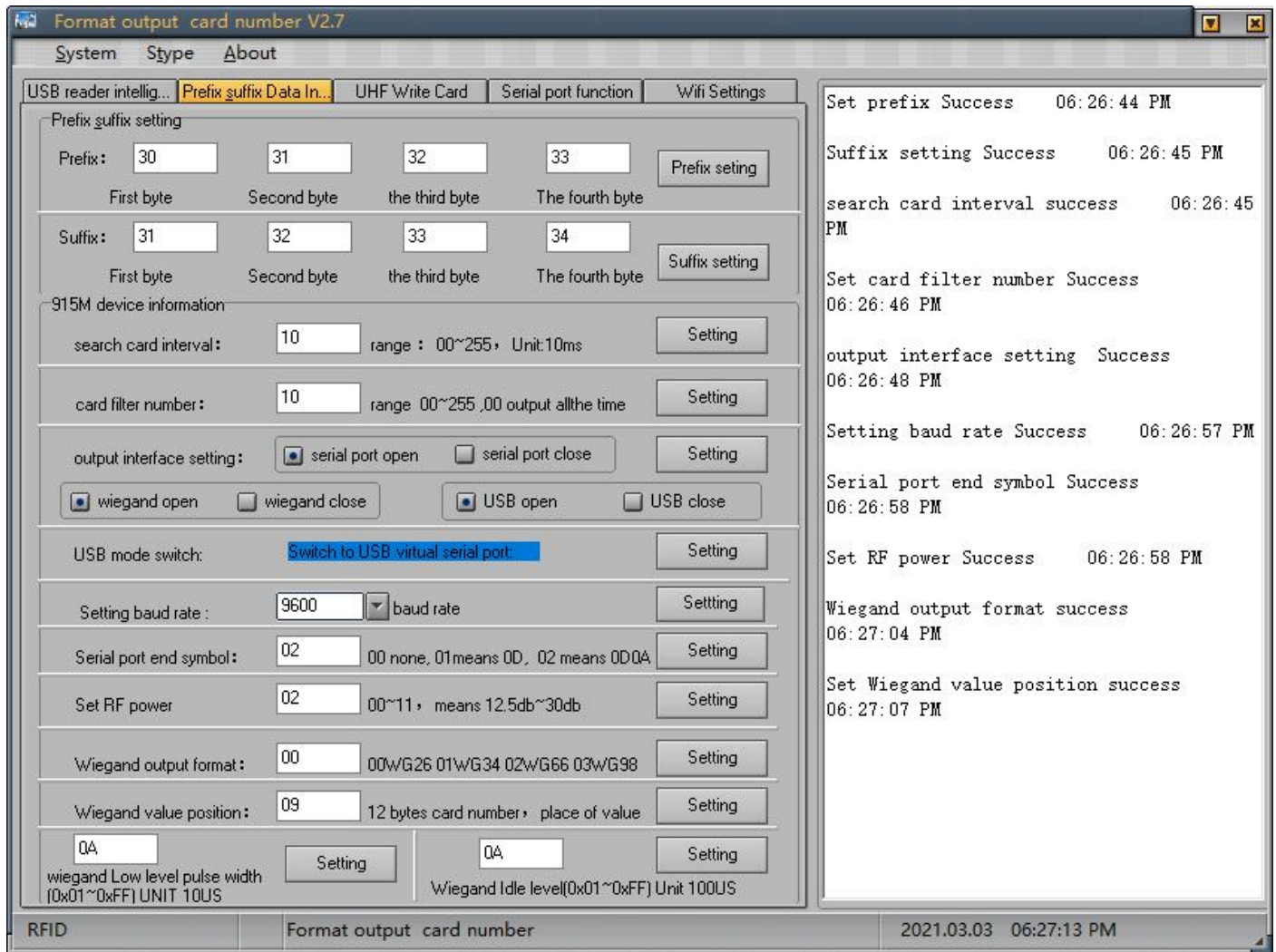
Add a serial input end character, enter the characters that need to be set in the input window, and set the dot setting button to complete the setup

RF power settings, the higher the value of the higher the power, the farther the sensing distance, enter the required value, click the settings button to complete the settings

Wigan output format, enter the corresponding value, represent the corresponding format, click the setting button to complete the settings

Weegan takes the value position, 12 byte card number, fills in the required position, clicks the setting button to complete the setup

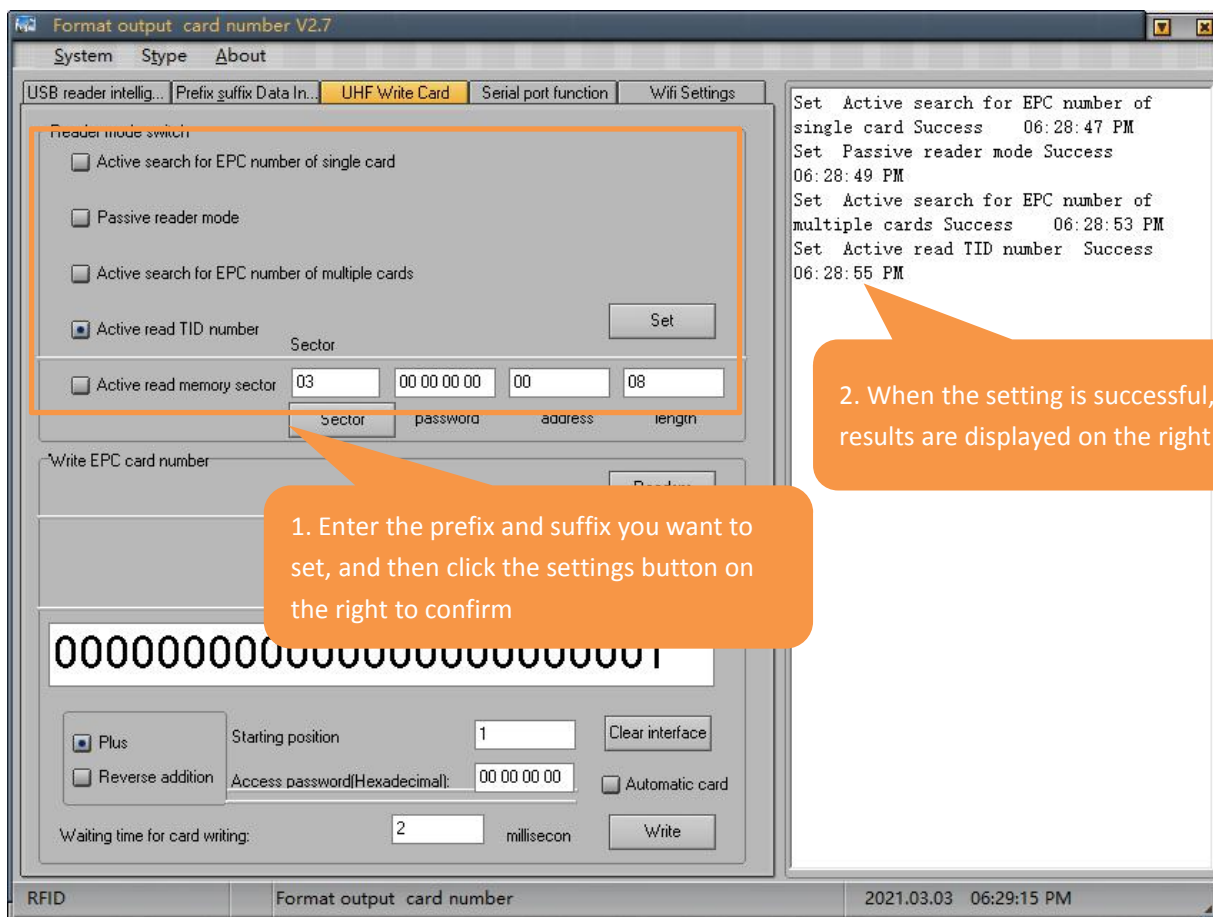
Wigan Low Pulse Wide Range and Wigan IdleLevel Pulse Wide Range, fill in the values that need to be set (0x01 to 0xFF), click the Settings button to complete the setup, as shown below:



## 4, configure the card reading mode

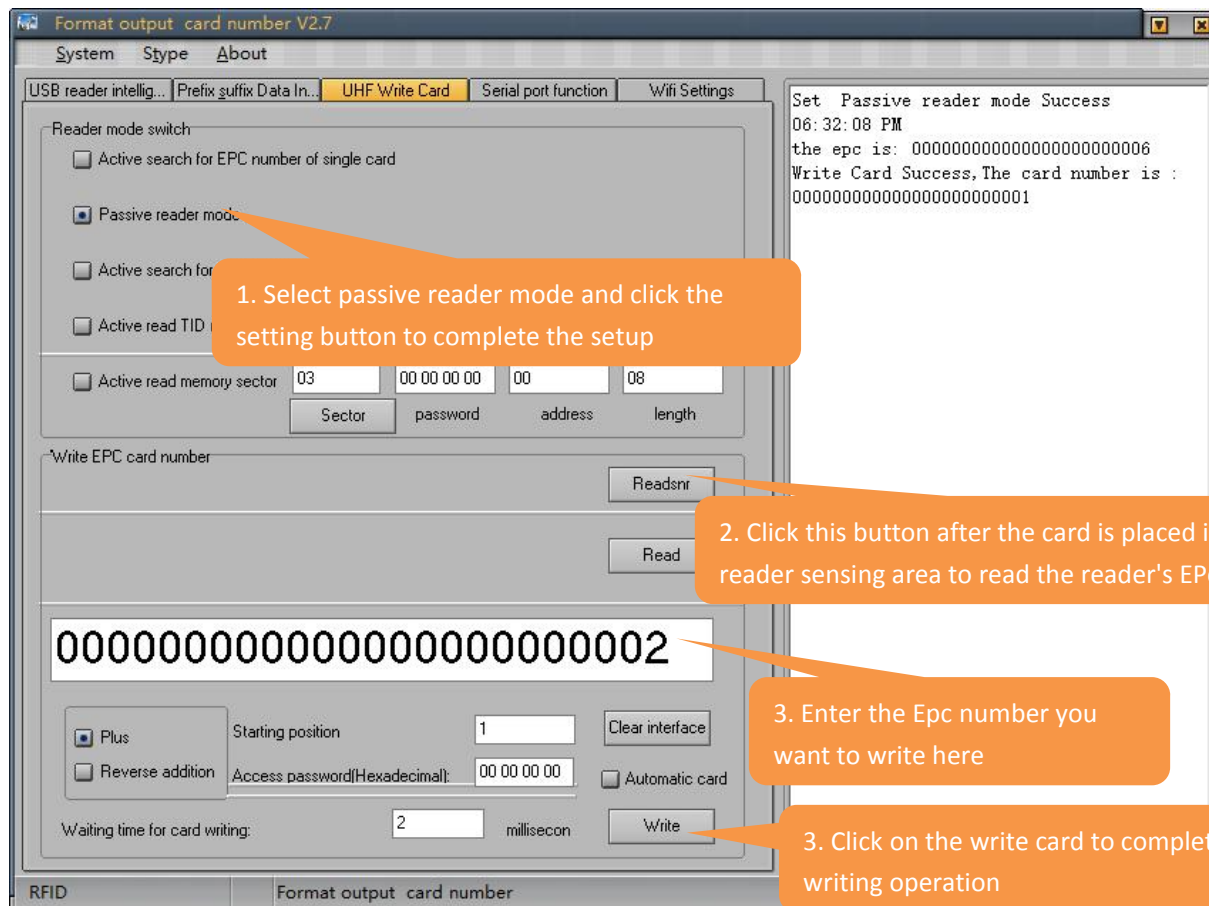
### 4.1 Reader mode switching



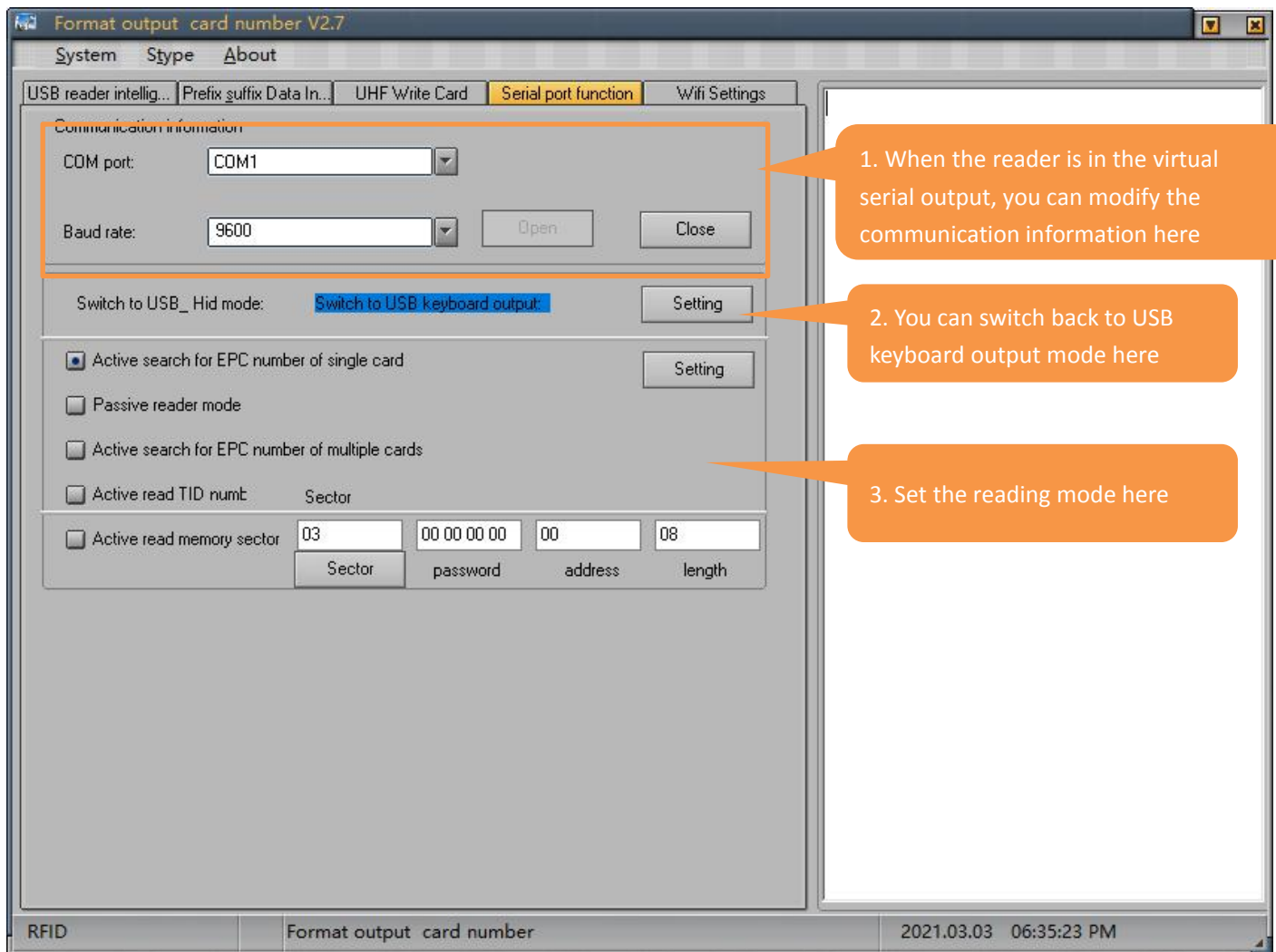


#### 4.2 EPC auto-write card

Place the card you want to write within the reader's recognition range and follow the diagram

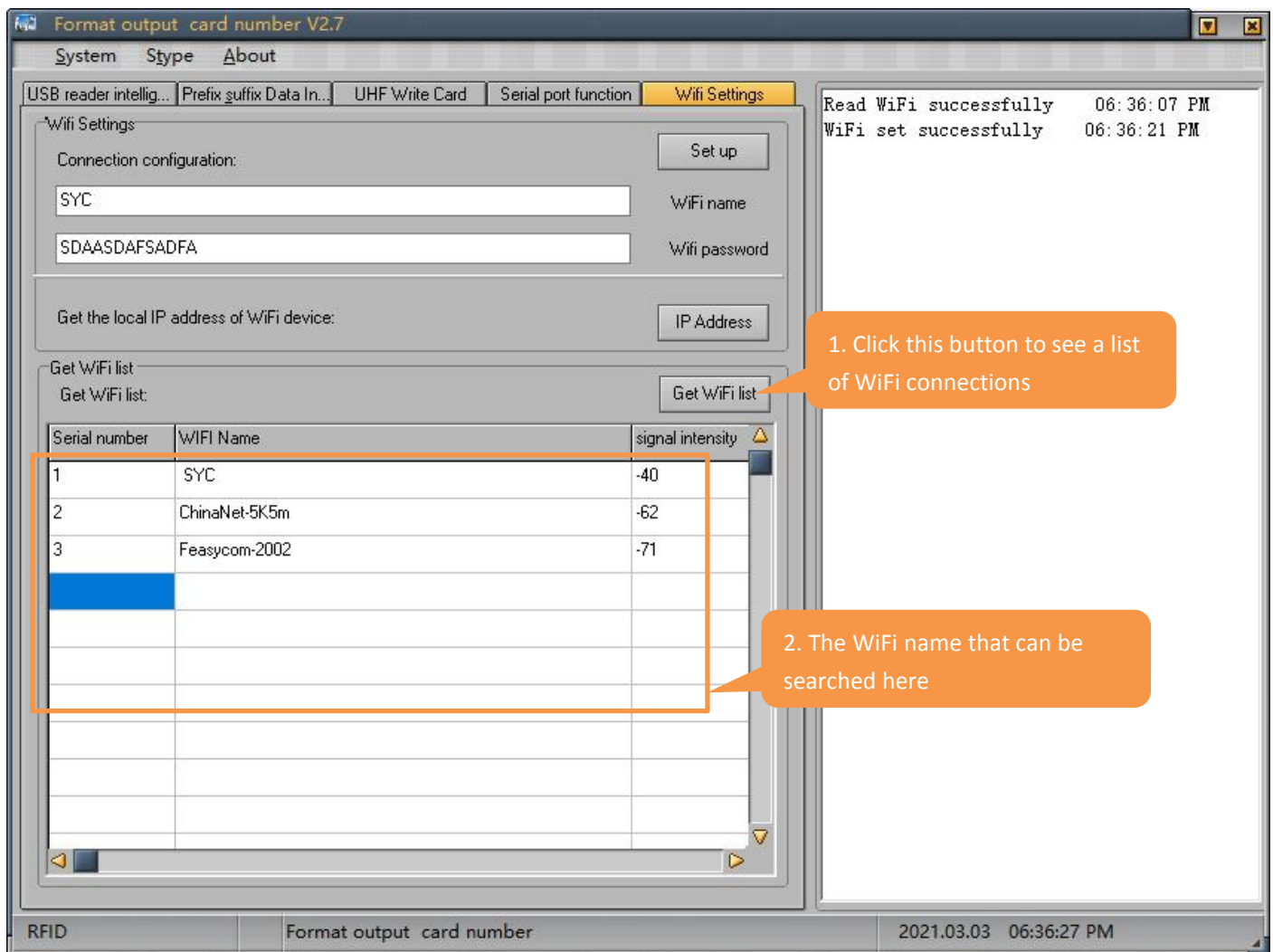


#### 5, serial data debugging



## 6, WIFI function settings

6.1 After connecting to your computer with usb, click Read the WiFi list to see the WiFi you can currently search for, and if you need to connect wifi in the list, you can connect normally





[illegible]