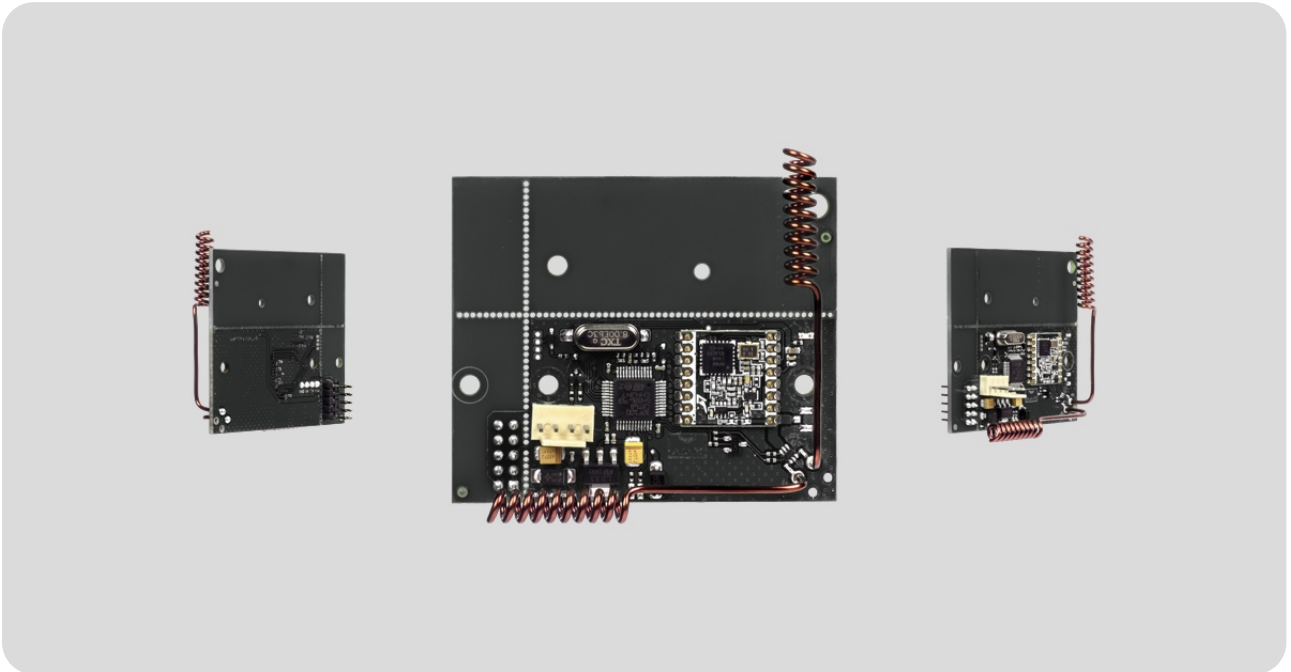


# uartBridge User manual

Updated January 12, 2023



**uartBridge** – is the module for integration with third-party wireless security and smart home systems.

A wireless network of smart and secure Ajax detectors can be added to a third-party security or smart home system through the UART interface.



Connection to [Ajax hubs](#) is not supported.

[Buy uartBridge](#)

**Supported sensors:**

- [MotionProtect](#) ([MotionProtect Plus](#))
- [DoorProtect](#)

- [SpaceControl](#)
- [GlassProtect](#)
- [CombiProtect](#)
- [FireProtect \(FireProtect Plus\)](#)
- [LeaksProtect](#)

Integration with third-party detectors is implemented at protocol level.

### uartBridge communication protocol

## Tech specs

Communication interface with central unit	UART (speed 57,600 Bd)
Use	Indoor
Radio signal power	25 mW
Radio communication protocol with Ajax devices and detectors	Jeweller <a href="#">Learn more</a>
Radio frequency band	866.0 – 866.5 MHz 868.0 – 868.6 MHz 868.7 – 869.2 MHz 905.0 – 926.5 MHz 915.85 – 926.5 MHz 921.0 – 922.0 MHz Depends on the region of sale.
Maximum distance between a wireless detector and uartBridge integration module	Up to 2,000 m (in open area)
Maximum number of connected devices	85
Detection of jamming	Yes
Detector performance monitoring	Yes
Power supply voltage	DC 5 V (from the UART interface)
Operating temperature range	From -10°C to +40°C

Operating humidity	Up to 90%
Dimensions	64 × 55 × 13 mm (without antennas) 110 × 58 × 13 mm (with antennas)
Service life	10 years

### Compliance with standards

Subscribe to the newsletter about safe life. No spam

**Subscribe**